

NYMEX at Settlement

WTI Crude Oil (\$/bbl)		
Month	Price	Change
JUL	77.21	(0.61)
AUG	77.85	(0.76)
SEP	78.66	(0.82)

RBOB Unleaded (cts/gal)		
Month	Price	Change
JUL	213.35	(0.93)
AUG	212.62	(1.17)
SEP	212.04	(1.39)

Heating Oil (cts/gal)		
Month	Price	Change
JUL	211.29	(3.30)
AUG	213.07	(3.06)
SEP	215.40	(2.73)

Table of Contents	
NYMEX Prices	p. 1
Basis Snapshot	p. 1
CBOT Prices	p. 2
Bio Fuels	p. 2
Blendstocks	p. 2
Gulf Coast	p. 3 & 4
GC Waterborne	p. 3 & 4
NY Harbor Barge	p. 5
NY Harbor Cargo	p. 5
Boston Cargo	p. 5
Buckeye Pipeline	p. 5
Laurel Pipeline	p. 5
Group 3	p. 6
Chicago	p. 6
DOE Data	p. 7
In the News	p. 8
Contact Us	p. 8
Methodology	p. 8

CHANGING GEARS, HEATING OIL LEADS PRODUCT LOSSES

SUBSCRIBER NOTICE: Due to the phase out of 500-ppm low-sulfur diesel for on- road use, OPIS will be removing "LS No 2" from its spot assessments for the New York Harbor Barge, Cargo and Boston markets effective August 2. OPIS plans to continue posting assessments for off-road diesel (LS2OFF) for these New York Harbor markets. If you have any questions, please contact Carly Wright at (301) 287-2530 or cwright@opisnet.com.

6/22/2010 - Heating oil futures losses outpaced those for RBOB Tuesday, reversing the trend of recent sessions.

Over the last two weeks average spot prices for ULSD ascended more than 15cts/gal, amid signs that demand is rising. Gains for spot gasoline prices during the same span have been about two-thirds of that, but the increase has caused U.S. pump prices to start going back up. Last week, retail prices for self-serve gasoline were below \$2.70/gal. Now they are over \$2.73/gal, according to OPIS data compiled with AAA and Wright Express.

In gasoline demand news, U.S. drivers stepped up their travel in April but at a more moderate pace than seen one month earlier, according to data from the Federal Highway Administration.

As measured by purchases at retail pumps, consumer demand for gasoline rose by 35,714 b/d, or 0.4%, to 9.311 million b/d for the week ended June 18, MasterCard Advisors' SpendingPulse said. However, compared to the same calendar week in 2009, total U.S. gasoline consumption was 2.7% lower.

Despite such tepid news, prompt RBOB futures losses were less than a penny today, while heating oil declines topped 3cts.

--Jessica Nesterak, jnesterak@opisnet.com

IN GASOLINE

Though basis for most grades of U.S. GULF COAST mogas rose, sagging futures tugged cash prices lower for the third straight session.

Cycle 36 9.0-lb. RVP M2 settled at a 10.75ct discount to July futures, or \$2.0260/gal outright - the lowest price level in a week. The M2 forward curve appeared flat when prompt to next-cycle rolls were struck at even pricing and July ratables went for 10cts under the August NYMEX.

The 7.8-lb. M1 spec spent the day hovering around 6.30cts under the Merc, with July ratables fetching 5.5cts below futures.

Premium 9.0-lb. RVP unleaded booked at 2.5cts below the Merc, a step higher, while prompt RBOB rose to 3.75cts below the July contract. Premium RBOB booked at 14cts over regular RBOB.

Gulf CBOB, meanwhile, is the only spot gasoline product in the nation to cost less than \$2/gal, at some 13.5cts-plus below futures today.

NEW YORK HARBOR conventional 9.0-lb. gasoline trading values continued to soften, closing Tuesday's session at a 7.5ct discount to futures. Since Friday, levels have weakened

(Continued on Page 2)

Today's Full Day East of the Rockies Prompt Spot Basis Range (cts/gal)

Product	Gulf Coast			New York Harbor Barge			Group 3			Chicago		
	Low	High	Mean	Low	High	Mean	Low	High	Mean	Low	High	Mean
Unl Reg	(6.50)	(6.00)	(6.250)	(8.00)	(7.00)	(7.500)	(4.75)	(4.25)	(4.500)	(5.00)	(4.00)	(4.500)
Unl Pre	2.80	3.30	3.050	3.00	4.00	3.500	11.00	11.50	11.250	14.00	15.00	14.500
RBOB Unl	(4.00)	(3.50)	(3.750)	0.10	1.10	0.600	---	---	---	0.75	1.75	1.250
RBOB Pre	7.00	8.00	7.500	12.00	12.25	12.125	---	---	---	5.75	6.75	6.250
CBOB Unl	(14.10)	(13.10)	(13.600)	(8.00)	(7.00)	(7.500)	---	---	---	(5.00)	(4.00)	(4.500)
CBOB Pre	(3.50)	(3.15)	(3.325)	5.25	6.25	5.750	---	---	---	---	---	---
HS No2	(3.90)	(3.50)	(3.700)	(1.60)	(0.60)	(1.100)	---	---	---	---	---	---
ULS No2	0.95	1.50	1.225	5.00	5.50	5.250	4.00	4.50	4.250	4.50	5.00	4.750
LS No2	---	---	---	1.50	2.50	2.000	---	---	---	---	---	---
LS2Off	(2.60)	(1.60)	(2.100)	1.50	2.50	2.000	---	---	---	0.50	1.00	0.750
Jet 54	(0.10)	0.25	0.075	3.50	4.50	4.000	4.25	5.25	4.750	4.50	5.50	5.000

For All Cash Prices:

See Page 3

See Page 5

See Page 6

See Page 6

OPIS Full-Day Refined Spots Report

June 22, 2010

ETHANOL & BLENDSTOCKS

OPIS Ethanol & Blendstock Pricing Corner

CBOT at Settlement

Product	Month	Price	Change
Ethanol (\$/gal)	JUL	1.7090	0.0000
Ethanol (\$/gal)	AUG	1.6990	0.0000
Soybean Oil (cts/lb)	JUL	39.46	0.00
Soybean Oil (cts/lb)	AUG	39.63	0.00
Corn (cts/bushel)	JUL	382.60	0.00
Corn (cts/bushel)	SEP	390.60	0.00

Today's Ethanol Prices (cts/gal)

Market	Low	High	Change
New York Barge	168.50	169.50	(1.500)
Gulf Coast Barge	167.00	170.00	(1.500)
Dallas Rail	165.00	168.00	(1.500)
Tampa Rail	170.00	173.00	(1.500)
Chicago	158.00	159.00	(2.250)

Today's U.S. RIN Values (cts/gal)

RIN Type	Year	Low	High	Change
Corn Ethanol	2009	0.45	0.55	0.000
Corn Ethanol	2010	2.35	2.50	(0.075)
Biodiesel	2009	4.35	4.75	0.300
Biodiesel	2010	31.50	35.00	3.250
Cellulosic	2010	18.00	22.00	0.000

Today's Biodiesel (B100) Prices (cts/gal)

Market	Low	High	Change
Gulf Coast	315.00	325.00	(2.000)
Chicago	302.00	310.00	(1.500)

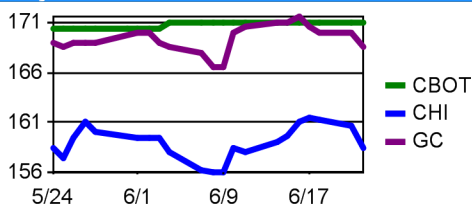
Today's MTBE Prices (cts/gal)

Market	Low	High	Change
Gulf Coast	227.00	228.00	(2.500)

Today's Alkylate Prices (cts/gal)

Market	Low	High	Change
GC Waterborne	227.35	227.85	(0.930)

30-Day Futures vs. Cash Ethanol Trend



For full Ethanol Blendstock information, please see the OPIS Ethanol and Biodiesel Information Service Newsletter (EBIS).

(Continued from Page 1)

1.5cts and are back to deeper discounts seen in the first week of June.

Gasoline cargos from Europe are expected to arrive this week, and that has pressured basis levels for key grades.

Harbor CBOB also slipped 25pts to a 7.5cts discount, making it "even" with 9.0-lb. regular gasoline. End-month barrels traded from 7.25-8cts under futures throughout the day.

Prompt RBOB was last discussed on either side of 60pts over the NYMEX, and end-month material traded some 35pts weaker.

Key gasoline grades, including conventional regular, RBOB and CBOB, are still slightly backwardated from now until the end of June.

Diffs notched 25pts higher in the GROUP 3 spot gasoline market Tuesday, continuing the run of strength in this region.

The market was pegged 4.25cts below futures this morning and this afternoon at 4.50cts below the screen. The end-day assessment reflected a 25pt basis incline. Prices did ease with futures, though, down 68pts to \$2.0885/gal.

Magellan Pipeline gasoline supply has been creeping lower and lower. This market usually sees stocks bottom out in May, so this year's pattern is atypical.

Group 3 now rivals CHICAGO for the boldest price for finished spot gasoline east of the Rockies - both markets are valued 4.50cts below futures.

IN DISTILLATES

Distillate fuels in the U.S. GULF COAST drifted lower with futures today, despite most basis levels rising.

Cycle 36 ULSD transacted from 95pts to as high as a 1.45ct premium to the Merc before drifting back towards 1.25cts over futures at the end of the day. Cash prices were in the black at midday, but faltering futures pushed them down over 2cts to about \$2.1250/gal going home.

The rest of the distillate slate was lightly traded, and basis levels moved less than a quarter-penny away from where they stood yesterday. Cash prices for the rest of the products dropped 3-3.5cts.

GROUP 3 ULSD basis gained 75pts Tuesday. There were multiple trades at 4cts over futures, and the market was last called 4.25cts over the screen. This couldn't overcome the slide on the NYMEX for heating oil, however, and prices slipped 2.55cts to \$2.1554/gal. CHICAGO ULSD traded at 4.50cts over futures earlier today, a small basis dip, but returned to a 4.75ct premium by the end of the day - flat to yesterday evening's assessment.

NEW YORK HARBOR outright diesel prices slipped over 3cts Tuesday on paper losses. ULSD cash values, which had briefly topped the \$2.20/gal mark yesterday, closed just below \$2.17/gal - 5.25cts over futures. Barrels traded into Laurel Pipeline at a nickel over the Merc earlier in the day.

Harbor heating oil diffs remained at a 1.10ct discount. Jet fuel premiums have shrunk some 2cts in the last week. Basis closed 4cts over futures.

Today's Full Day East of the Rockies Prompt Spot Prices Range (cts/gal)

Product	Gulf Coast			New York Harbor Barge			Group 3			Chicago		
	Low	High	Mean	Low	High	Mean	Low	High	Mean	Low	High	Mean
Unl Reg	206.85	207.35	207.100	205.35	206.35	205.850	208.60	209.10	208.850	208.35	209.35	208.850
Unl Pre	216.15	216.65	216.400	216.35	217.35	216.850	224.35	224.85	224.600	227.35	228.35	227.850
RBOB Unl	209.35	209.85	209.600	213.45	214.45	213.950	---	---	---	214.10	215.10	214.600
RBOB Pre	220.35	221.35	220.850	225.35	225.60	225.475	---	---	---	219.10	220.10	219.600
CBOB Unl	199.25	200.25	199.750	205.35	206.35	205.850	---	---	---	208.35	209.35	208.850
CBOB Pre	209.85	210.20	210.025	218.60	219.60	219.100	---	---	---	---	---	---
HS No2	207.39	207.79	207.590	209.69	210.69	210.190	---	---	---	---	---	---
ULS No2	212.24	212.79	212.515	216.29	216.79	216.540	215.29	215.79	215.540	215.79	216.29	216.040
LS No2	---	---	---	212.79	213.79	213.290	---	---	---	---	---	---
LS2Off	208.69	209.69	209.190	212.79	213.79	213.290	---	---	---	211.79	212.29	212.040
Jet 54	211.19	211.54	211.365	214.79	215.79	215.290	215.54	216.54	216.040	215.79	216.79	216.290

For All Cash Prices:

See Page 3

See Page 5

See Page 6

See Page 6

OPIS Full-Day Refined Spots Report

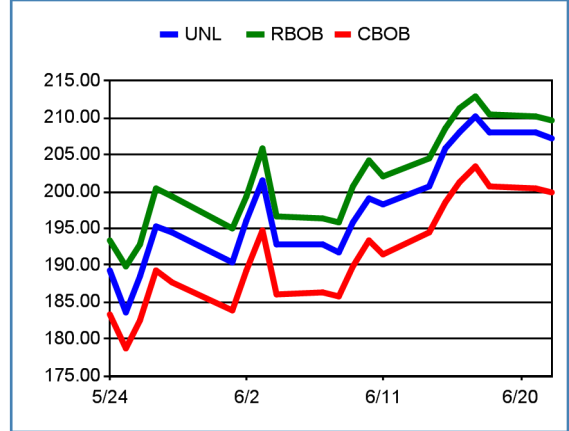
June 22, 2010

U.S. GULF COAST CASH PRICES

Today's Gulf Coast Spot Gasoline Prices (cts/gal)

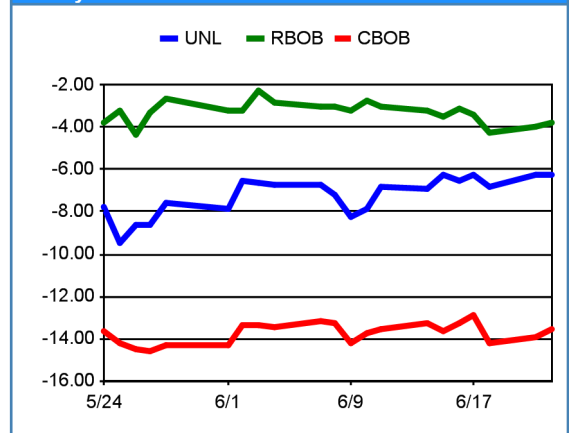
Gulf Coast		Prompt Prices				
Product	Cycle	Low	High	Mean	Change	Wt. Avg
Unl 7.8	C36	206.85	207.35	207.100	(0.930)	207.190
Pre 7.8	C36	216.15	216.65	216.400	(1.630)	---
Unl 9.0	C36	202.50	202.85	202.675	(0.630)	202.660
Pre 9.0	C36	210.60	211.10	210.850	(0.680)	---
RBOB Unl VOC	C36	209.35	209.85	209.600	(0.680)	209.600
RBOB Pre VOC	C36	220.35	221.35	220.850	(2.180)	---
LS CBOB Unl 7.0	C36	210.55	211.05	210.800	(0.480)	217.100
LS CBOB Pre 7.0	C37	217.07	217.57	217.320	(0.960)	---
CBOB Unl 7.8	C36	205.85	206.35	206.100	(0.930)	---
CBOB Unl 9.0	C36	199.25	200.25	199.750	(0.630)	---
CBOB Pre 7.8	C36	215.15	215.65	215.400	(1.630)	---
CBOB Pre 9.0	C36	209.85	210.20	210.025	(0.780)	---

30-Day Gulf Gas Prices



Gulf Coast		Prompt Plus One Prices				
Product	Cycle	Low	High	Mean	Change	
Unl 7.8	C37	206.82	207.32	207.070	(0.960)	
Pre 7.8	C37	216.12	216.62	216.370	(1.660)	
Unl 9.0	C37	202.37	202.87	202.620	(0.810)	
Pre 9.0	C37	210.62	211.12	210.870	(3.060)	
RBOB Unl VOC	C37	209.12	210.12	209.620	(0.660)	
RBOB Pre VOC	C37	220.82	221.32	221.070	(1.960)	
LS CBOB Unl 7.0	C37	210.57	211.07	210.820	(1.210)	
LS CBOB Pre 7.0	C37	217.07	217.57	217.320	(0.920)	
CBOB Unl 7.8	C37	205.82	206.32	206.070	(0.960)	
CBOB Unl 9.0	C37	199.52	200.02	199.770	(0.660)	
CBOB Pre 7.8	C37	215.12	215.62	215.370	(1.660)	
CBOB Pre 9.0	C37	209.62	210.12	209.870	(3.060)	

30-Day Gulf Gas Basis



Gulf Coast		Prompt Plus Two Cycles Prices				
Product	Cycle	Low	High	Mean	Change	
Unl 7.8	C38	206.62	207.62	207.120	(0.870)	
Pre 7.8	C38	215.92	216.92	216.420	(1.570)	
Unl 9.0	C38	202.17	203.17	202.670	(0.845)	
Pre 9.0	C38	210.42	211.42	210.920	(3.095)	
RBOB Unl VOC	C38	209.17	210.17	209.670	(0.620)	
RBOB Pre VOC	C38	220.62	221.62	221.120	(1.870)	
LS CBOB Unl 7.0	C38	210.37	211.37	210.870	(1.120)	
LS CBOB Pre 7.0	C39	216.87	217.87	217.370	(0.870)	
CBOB Unl 7.8	C38	205.62	206.62	206.120	(0.870)	
CBOB Unl 9.0	C38	199.32	200.32	199.820	(0.695)	
CBOB Pre 7.8	C38	214.92	215.92	215.420	(1.570)	
CBOB Pre 9.0	C38	209.42	210.42	209.920	(3.095)	

Month	Ratable Prices			
	Low	High	Mean	Change
	---	---	---	---
JUL	202.62	202.87	202.745	(0.495)
	---	---	---	---
	---	---	---	---
	---	---	---	---
	---	---	---	---
	---	---	---	---
	---	---	---	---
	---	---	---	---

Today's Gulf Coast Waterborne Spot Gasoline Prices (cts/gal)

GC Waterborne		Prompt Prices			
Product		Low	High	Mean	Change
Unl 7.8		207.35	207.85	207.600	(0.930)
Pre 7.8		216.65	217.15	216.900	(1.630)
Unl 9.0		203.00	203.35	203.175	(0.630)
Pre 9.0		211.10	211.60	211.350	(0.680)

Product	End Month Prices			
	Low	High	Mean	Change
Unl 7.8	207.05	208.05	207.550	(0.980)
Unl 9.0	202.60	203.60	203.100	(0.380)

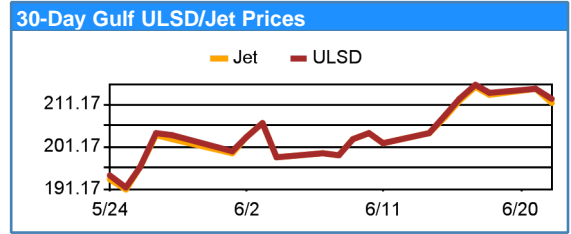
OPIS Full-Day Refined Spots Report

June 22, 2010

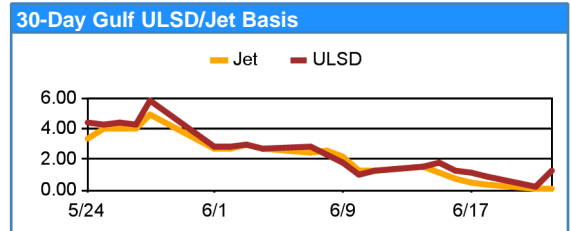
U.S. GULF COAST CASH PRICES

Today's Gulf Coast Spot Diesel Prices (cts/gal)

Gulf Coast		Prompt Prices				
Product	Cycle	Low	High	Mean	Change	Wt. Avg
ULS No2	C36	212.24	212.79	212.515	(2.350)	212.465
LS2OFF	C36	208.69	209.69	209.190	(3.150)	---
HS No2	C36	207.39	207.79	207.590	(3.150)	---
55 Kero	C36	212.59	213.59	213.090	(3.100)	---
Jet 54	C36	211.19	211.54	211.365	(3.350)	211.320



Gulf Coast		Prompt Plus One Prices				
Product	Cycle	Low	High	Mean	Change	
ULS No2	C37	212.47	213.47	212.970	(2.220)	
LS2OFF	C37	208.67	209.67	209.170	(3.170)	
HS No2	C37	207.57	208.57	208.070	(2.810)	
55 Kero	C37	213.07	214.07	213.570	(3.060)	
Jet 54	C37	211.57	212.57	212.070	(3.060)	



Gulf Coast		Prompt Plus Two Cycles Prices				
Product	Cycle	Low	High	Mean	Change	
ULS No2	C38	212.97	213.97	213.470	(2.160)	
LS2OFF	C38	208.67	209.67	209.170	(3.210)	
HS No2	C38	207.67	208.67	208.170	(2.910)	
55 Kero	C38	213.82	214.82	214.320	(2.810)	
Jet 54	C38	212.32	213.32	212.820	(2.810)	

		Ratable Prices			
Month		Low	High	Mean	Change
JUL		213.72	214.72	214.220	(2.910)
		---	---	---	---
		---	---	---	---
		---	---	---	---

Today's Gulf Coast Waterborne Spot Diesel Prices (cts/gal)

GC Waterborne		Prompt Prices			
Product		Low	High	Mean	Change
ULS No2		212.99	213.54	213.265	(2.350)
LS No2		210.19	211.19	210.690	(3.150)
LS2OFF		209.44	210.44	209.940	(3.150)
HS No2		209.64	210.04	209.840	(3.150)
55 Kero		214.09	215.09	214.590	(2.350)
Jet 54		212.69	213.04	212.865	(2.600)

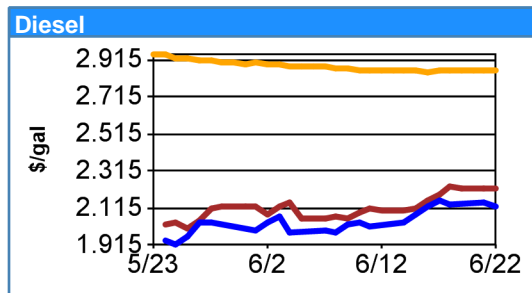
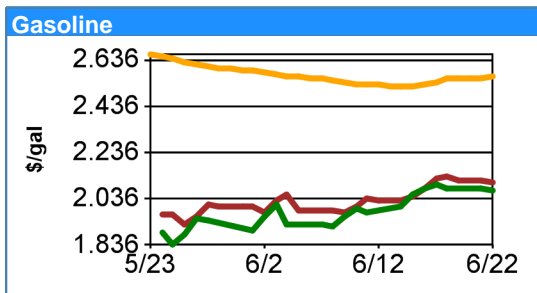
		End Month Prices			
Product		Low	High	Mean	Change
ULS No2		215.09	216.09	215.590	(0.350)
LS No2		210.19	211.19	210.690	(3.150)
LS2OFF		209.44	210.44	209.940	(3.150)
HS No2		210.75	211.25	211.000	(2.630)

Today's Spot-to-Rack-to-Retail Snapshot

Gasoline (\$/gal)	Price	Change
Basket of Racks	2.072	-0.008
Retail Average	2.568	0.013
GC Gasoline	2.071	-0.009

Diesel (\$/gal)	Price	Change
Basket of Racks	2.244	0.007
Retail Average	2.858	0.004
GC Diesel	2.125	-0.024

30-Day Spot-to-Rack-to-Retail Trend



Legend			
GC Gasoline	Basket of Racks		
GC Diesel	Retail Average		

RACK-TO-RETAIL TREND SNAPSHOT METHODOLOGY

The spot-to-retail snapshot provides a tool to project how spot and wholesale rack prices will impact retail prices for gasoline and diesel fuel in the U.S. Gulf Coast. Spot prices are current-day regular grade and ultra-low-sulfur diesel, FOB Colonial Pipeline. OPIS wholesale/rack prices are taken from a basket of racks for terminals in Texas, Alabama, Louisiana, Arkansas, and Mississippi. OPIS retail prices are compiled from site specific data at metropolitan locations corresponding to their nearest FOB rack delivery origin point. For more information on OPIS' retail methodology, please visit www.opisnet.com.

OPIS Full-Day Refined Spots Report

June 22, 2010

U.S. NORTHEAST CASH PRICES

Today's New York Barge Spot Prices (cts/gal)

Product	Prompt Prices			
	Low	High	Mean	Change
Unl 9.0	205.35	206.35	205.850	(1.180)
Pre 9.0	216.35	217.35	216.850	(0.930)
RBOB Unl VOC	213.45	214.45	213.950	(0.930)
RBOB Pre VOC	225.35	225.60	225.475	(1.455)
CBOB Unl 7.8	205.35	206.35	205.850	(1.180)
CBOB Pre 7.8	218.60	219.60	219.100	(0.930)
ULS No2	216.29	216.79	216.540	(3.300)
LS No2	212.79	213.79	213.290	(3.300)
LS2OFF	212.79	213.79	213.290	(3.300)
HS No2	209.69	210.69	210.190	(3.500)
55 Kero	218.04	218.54	218.290	(2.800)
ULS Kero	224.79	225.79	225.290	(3.300)
Jet 54	214.79	215.79	215.290	(3.300)

Product	End Month Prices			
	Low	High	Mean	Change
Unl 9.0	205.35	205.85	205.600	(1.255)
Pre 9.0	216.35	217.35	216.850	(0.930)
RBOB Unl VOC	213.35	213.85	213.600	(0.830)
RBOB Pre VOC	225.35	225.60	225.475	(1.455)
CBOB Unl 7.8	205.10	206.10	205.600	(1.180)
CBOB Pre 7.8	218.60	219.60	219.100	(0.930)
ULS No2	216.04	217.04	216.540	(3.300)
LS No2	212.79	213.79	213.290	(3.300)
LS2OFF	212.79	213.79	213.290	(3.300)
HS No2	209.69	210.69	210.190	(3.500)
55 Kero	217.79	218.79	218.290	(2.800)
ULS Kero	224.79	225.79	225.290	(3.300)
Jet 54	214.79	215.79	215.290	(3.300)

Today's New York Cargo Spot Prices (cts/gal)

Product	Prompt Prices			
	Low	High	Mean	Change
Unl 9.0	205.35	206.35	205.850	(1.180)
Pre 9.0	216.35	217.35	216.850	(0.930)
RBOB Unl VOC	213.45	214.45	213.950	(0.930)
RBOB Pre VOC	225.35	225.60	225.475	(1.455)
ULS No2	216.29	216.79	216.540	(3.300)
LS No2	212.79	213.79	213.290	(3.300)
LS2OFF	212.79	213.79	213.290	(3.300)
HS No2	209.69	210.69	210.190	(3.500)
55 Kero	218.04	218.54	218.290	(2.800)
ULS Kero	224.79	225.79	225.290	(3.300)
Jet 54	214.79	215.79	215.290	(3.300)

Product	End Month Prices			
	Low	High	Mean	Change
Unl 9.0	205.35	205.85	205.600	(1.255)
Pre 9.0	216.35	217.35	216.850	(0.930)
RBOB Unl VOC	213.35	213.85	213.600	(0.830)
RBOB Pre VOC	225.35	225.60	225.475	(1.455)
ULS No2	216.04	217.04	216.540	(3.300)
LS No2	212.79	213.79	213.290	(3.300)
LS2OFF	212.79	213.79	213.290	(3.300)
HS No2	209.69	210.69	210.190	(3.500)
55 Kero	217.79	218.79	218.290	(2.800)
ULS Kero	224.79	225.79	225.290	(3.300)
Jet 54	214.79	215.79	215.290	(3.300)

Today's Boston Spot Prices (cts/gal)

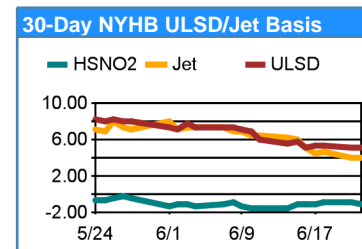
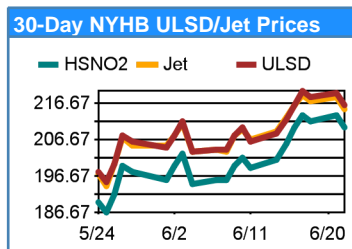
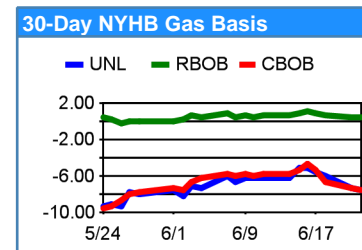
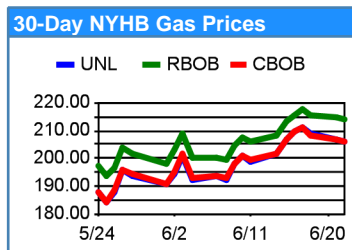
Product	Prompt Prices			
	Low	High	Mean	Change
RBOB Unl VOC	215.80	216.80	216.300	(0.930)
RBOB Pre VOC	227.70	227.95	227.825	(1.455)
ULS No2	217.79	218.29	218.040	(3.300)
LS No2	214.29	215.29	214.790	(3.300)
LS2OFF	214.29	215.29	214.790	(3.300)
HS No2	211.19	212.19	211.690	(3.500)
55 Kero	219.54	220.04	219.790	(2.800)
ULS Kero	226.29	227.29	226.790	(3.300)

Today's Laurel Spot Prices (cts/gal)

Product	Prompt Prices			
	Low	High	Mean	Change
Unl 9.0	205.85	206.85	206.350	(1.180)
Pre 9.0	216.85	217.85	217.350	(0.930)
RBOB Unl 6.6	213.95	214.95	214.450	(0.930)
RBOB Pre 6.6	225.60	226.10	225.850	(1.580)
ULS No2	216.54	217.04	216.790	(3.300)
HS No2	210.69	211.69	211.190	(3.500)
55 Kero	218.54	219.04	218.790	(2.800)
Jet 54	215.29	216.29	215.790	(3.300)

Today's Buckeye Spot Prices (cts/gal)

Product	Prompt Prices			
	Low	High	Mean	Change
Unl 9.0	205.35	206.35	205.850	(1.180)
Pre 9.0	216.35	217.35	216.850	(0.930)
RBOB Unl VOC	213.45	214.45	213.950	(0.930)
RBOB Pre VOC	225.10	225.60	225.350	(1.580)
CBOB Unl 7.8	205.60	206.10	205.850	(1.180)
CBOB Pre 7.8	218.60	219.60	219.100	(0.930)
ULS No2	216.04	216.54	216.290	(3.550)
HS No2	209.69	210.69	210.190	(3.500)
55 Kero	217.79	218.79	218.290	(2.800)
Jet 54	214.79	215.79	215.290	(3.300)



OPIS Full-Day Refined Spots Report

June 22, 2010

U.S. MIDWEST CASH PRICES

Today's Group 3 Spot Prices (cts/gal)

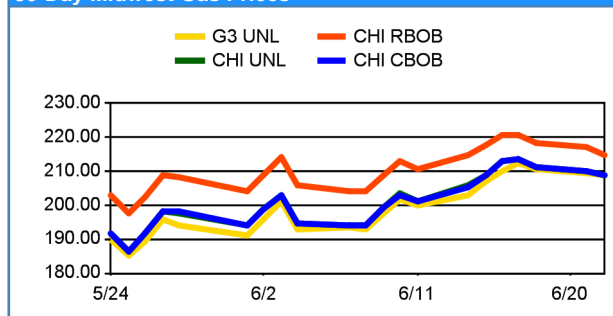
Group 3 Product	Prompt Prices			
	Low	High	Mean	Change
Unl 9.0	208.60	209.10	208.850	(0.755)
Pre 9.0	224.35	224.85	224.600	(0.505)
ULS No2	215.29	215.79	215.540	(2.925)
Jet 54	215.54	216.54	216.040	(3.050)

Group 3 Product	End Month Prices			
	Low	High	Mean	Change
Unl 9.0	208.60	209.10	208.850	(0.430)
Pre 9.0	224.35	224.85	224.600	(0.180)
ULS No2	215.29	215.79	215.540	(2.925)
Jet 54	215.54	216.54	216.040	(3.050)

Today's Chicago Spot Prices (cts/gal)

Chicago Product	Cycle	Prompt Prices			
		Low	High	Mean	Change
Unl 9.0	Jun3	208.35	209.35	208.850	(1.180)
Pre 9.0	Jun3	227.35	228.35	227.850	(1.180)
RBOB Unl 9.0	Jun3	214.10	215.10	214.600	(2.430)
RBOB Pre 9.0	Jun3	219.10	220.10	219.600	(2.430)
CBOB Unl 9.0	Jun3	208.35	209.35	208.850	(1.180)
ULS No2	Jun3	215.79	216.29	216.040	(3.300)
LS2OFF	Jun3	211.79	212.29	212.040	(3.300)
Jet 54	Jun3	215.79	216.79	216.290	(3.300)

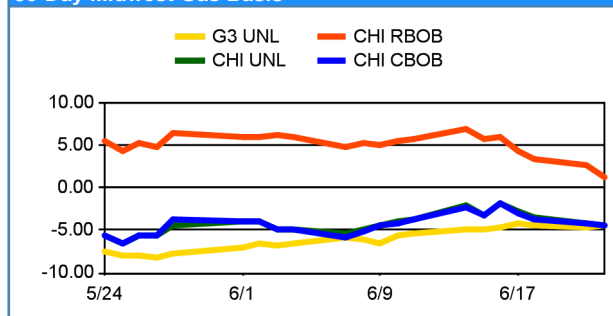
30-Day Midwest Gas Prices



Chicago

Product	Cycle	Prompt Plus One Prices			
		Low	High	Mean	Change
Unl 9.0	Jul1	207.62	208.62	208.120	(1.170)
Pre 9.0	Jul1	226.62	227.62	227.120	(1.170)
RBOB Unl 9.0	Jul1	213.37	214.37	213.870	(2.420)
RBOB Pre 9.0	Jul1	218.37	219.37	218.870	(2.420)
CBOB Unl 9.0	Jul1	207.62	208.62	208.120	(1.170)
ULS No2	Jul1	215.82	216.82	216.320	(3.310)
LS2OFF	Jul1	211.82	212.82	212.320	(3.310)
Jet 54	Jul1	216.32	217.32	216.820	(3.060)

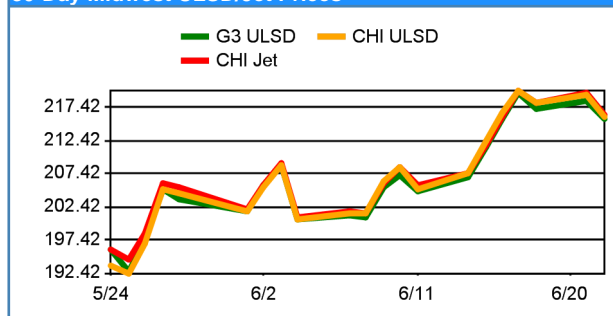
30-Day Midwest Gas Basis



Chicago

Product	Cycle	Prompt Plus Two Prices			
		Low	High	Mean	Change
Unl 9.0	Jul2	207.37	208.37	207.870	(1.170)
Pre 9.0	Jul2	226.37	227.37	226.870	(1.170)
RBOB Unl 9.0	Jul2	213.12	214.12	213.620	(2.420)
RBOB Pre 9.0	Jul2	218.12	219.12	218.620	(2.420)
CBOB Unl 9.0	Jul2	207.37	208.37	207.870	(1.170)
ULS No2	Jul2	216.07	217.07	216.570	(3.310)
LS2OFF	Jul2	212.07	213.07	212.570	(3.310)
Jet 54	Jul2	216.32	217.32	216.820	(3.060)

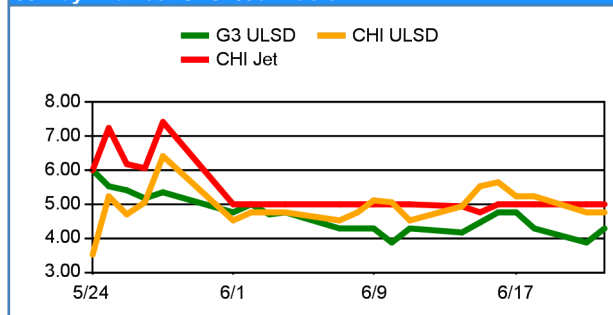
30-Day Midwest ULSD/Jet Prices



Chicago

Product	Cycle	Prompt Plus Three Prices			
		Low	High	Mean	Change
Unl 9.0	Jul3	207.12	208.12	207.620	(1.170)
Pre 9.0	Jul3	226.12	227.12	226.620	(1.170)
RBOB Unl 9.0	Jul3	212.87	213.87	213.370	(2.420)
RBOB Pre 9.0	Jul3	217.87	218.87	218.370	(2.420)
CBOB Unl 9.0	Jul3	207.12	208.12	207.620	(1.170)
ULS No2	Jul3	216.32	217.32	216.820	(3.310)
LS2OFF	Jul3	212.32	213.32	212.820	(3.310)
Jet 54	Jul3	216.32	217.32	216.820	(3.060)

30-Day Midwest ULSD/Jet Basis



OPIS Full-Day Refined Spots Report

June 22, 2010

BASIS & SUPPLY TRENDS

East of the Rockies Prompt Mean Differential 10-Day Trend Line (cts/gal)

	Unleaded Regular					Ultra Low Sulfur No. 2				
	Gulf	NYHB	G3	Chi	Front NYMEX	Gulf	NYHB	G3	Chi	Front NYMEX
6/22/10	(6.25)	(7.50)	(4.50)	(4.50)	213.35	1.22	5.25	4.25	4.75	211.29
6/21/10	(6.25)	(7.25)	(4.67)	(4.25)	214.28	0.27	5.25	3.87	4.75	214.59
6/18/10	(6.85)	(6.00)	(4.50)	(3.50)	214.76	0.90	5.50	4.25	5.25	212.89
6/17/10	(6.25)	(5.50)	(4.25)	(2.75)	216.40	1.18	5.38	4.75	5.25	214.74
6/16/10	(6.50)	(5.00)	(4.62)	(1.87)	214.52	1.22	5.25	4.75	5.62	211.01
5-Day Avg	(6.42)	(6.25)	(4.51)	(3.38)	214.66	0.96	5.33	4.37	5.13	212.90
6/15/10	(6.25)	(5.10)	(5.00)	(3.25)	212.15	1.75	5.75	4.48	5.50	206.85
6/14/10	(6.88)	(6.18)	(5.00)	(2.00)	207.64	1.51	5.66	4.16	4.91	202.59
6/11/10	(6.85)	(6.13)	(5.35)	(3.75)	204.97	1.25	6.00	4.25	4.50	200.53
6/10/10	(7.87)	(6.25)	(5.68)	(3.87)	207.05	1.00	7.00	3.88	5.05	203.28
6/9/10	(8.25)	(6.25)	(6.50)	(4.50)	203.97	1.75	7.25	4.25	5.13	200.96
5-Day Avg	(7.22)	(5.98)	(5.51)	(3.48)	207.16	1.45	6.33	4.20	5.02	202.84

U.S. Regional DOE Supply/Production Data

Total Gasoline Stocks (in million barrels)

Week Ending	Gulf			East			Midwest			Nation		
	2010	2009	Change	2010	2009	Change	2010	2009	Change	2010	2009	Change
6/11/10	73.9	68.3	5.6	59.4	53.9	5.5	49.4	48.6	0.7	218.3	205.0	13.3
6/4/10	73.4	68.7	4.7	60.7	52.1	8.5	49.7	47.5	2.2	219.0	201.6	17.3
5/28/10	72.9	70.2	2.6	59.7	52.6	7.1	50.4	47.2	3.2	219.0	203.2	15.8
5/21/10	73.8	70.1	3.7	59.6	52.7	6.9	51.6	46.6	4.9	221.6	203.4	18.2
4 Wk Avg	73.5	69.3	4.2	59.8	52.8	7.0	50.2	47.5	2.8	219.5	203.3	16.2

Total Gasoline Production (in thousand barrels/day)

Week Ending	Gulf			East			Midwest			Nation		
	2010	2009	Change	2010	2009	Change	2010	2009	Change	2010	2009	Change
6/11/10	2,470	2,794	-324	2,755	2,454	301	2,198	2,147	51	9,198	9,131	67
6/4/10	2,463	2,726	-263	2,642	2,408	234	2,173	2,028	145	9,037	8,951	86
5/28/10	2,514	2,820	-306	2,688	2,306	382	2,167	2,033	134	9,160	8,797	363
5/21/10	2,542	2,981	-439	2,495	2,487	8	2,215	2,132	83	9,011	9,378	-367
4 Wk Avg	2,497	2,830	-333	2,645	2,414	231	2,188	2,085	103	9,102	9,064	37

Total Distillates Stocks (in million barrels)*

Week Ending	Gulf			East			Midwest			Nation		
	2010	2009	Change	2010	2009	Change	2010	2009	Change	2010	2009	Change
6/11/10	50.4	43.8	6.6	60.5	60.2	0.2	29.8	31.3	-1.5	156.6	150.0	6.6
6/4/10	50.2	42.1	8.2	58.9	61.1	-2.2	29.4	31.7	-2.3	154.8	149.7	5.1
5/28/10	48.6	42.3	6.3	59.1	59.8	-0.7	29.4	32.3	-2.9	153.0	150.0	3.0
5/21/10	46.5	42.9	3.6	60.2	58.6	1.6	29.4	32.0	-2.5	152.5	148.4	4.2
4 Wk Avg	48.9	42.7	6.2	59.7	59.9	-0.3	29.5	31.8	-2.3	154.2	149.5	4.7

* Minus Jet Fuel

Total Distillates Production (in thousand barrels/day)*

Week Ending	Gulf			East			Midwest			Nation		
	2010	2009	Change	2010	2009	Change	2010	2009	Change	2010	2009	Change
6/11/10	2,169	2,008	161	373	360	13	1,043	887	156	4,281	3,915	366
6/4/10	2,200	2,003	197	421	361	60	1,026	890	136	4,379	3,933	446
5/28/10	2,195	2,153	42	402	367	35	1,016	875	141	4,334	4,052	282
5/21/10	2,018	2,098	-80	422	409	13	1,021	858	163	4,180	4,036	144
4 Wk Avg	2,146	2,066	80	405	374	30	1,027	878	149	4,294	3,984	310

* Minus Jet Fuel

DOE's Implied Demand (in million barrels)

Product	This Week	Last Week
Gasoline		19.3
Distillate		1.3

DOE's Refinery Utilization Rate

This Week	Last Week
0.0%	44.0%

APRIL ROAD TRAFFIC CLIMBS 1.2% VS. YEAR AGO: FHWA

U.S. drivers stepped up their travel in April but at a more moderate pace than seen one month earlier, according to the Federal Highway Administration.

Nationwide vehicle miles traveled (VMT) totaled 255.9 billion, 0.6% higher compared to March and up 1.2% versus April 2009, the Department of Transportation agency said Tuesday.

The year-on-year increase built on promising indications of annual fuel demand growth seen in March but appears to have been tempered by April's spike in gasoline prices. At the time, the U.S. average retail price of some \$2.85/gal was the highest level since October 2008. Pump prices pushed even higher in May before falling back to \$2.75 by the end of the month.

The regional breakdown of the FHWA April data showed a wide range of change compared to a year ago. Miles driven in the North-Central region rose the most at 2.2% while travel in the Rocky Mountain and West Coast regions rose only 0.3% versus April 2009. The South Gulf posted a year-on-year increase of 1.7% and miles driven rose 1.1% in the Northeast. Year-on-year growth in the South Atlantic region registered at 0.8%.

Year-on-year changes in the highest-driving-population states were mostly similar to the totals of the corresponding regions. VMT in Texas were 1.9% higher on the year while drivers in Florida logged 0.6% more miles. New York miles traveled were 1.4% higher while those in Ohio were up 2.5%. West of the Rockies, California's 0.5% year-on-year decline was offset by sizeable gains in Washington (1.8%) and Colorado (4.3%).

On a cumulative basis as of April, U.S. motorists drove 0.2% less in 2010 than they did during the comparable period a year earlier.

ENTERPRISE OUTBID IN AUCTION FOR HOUSTON SHIP CHANNEL TERMINAL ASSET

Enterprise Products Operating LLC was outbid in a bankruptcy auction that offered Bigler's petchemical terminal assets on the Houston Ship Channel late last week, a Bigler official told OPIS on Tuesday.

Industry sources said that Enterprise, a major LPG player in the U.S., was interested to buy those petrochemical terminals for LPG storage.

Enterprise, which owns TEPPCO crude and oil products pipeline system, could also have plans to convert the assets to store crude and oil products, but that was deemed less likely than LPG.

An Enterprise spokesman was unavailable for comment last week.

The Bigler terminals were sold for \$38 million to Amegy Bank, which is expected to resell the assets.

These terminals were used mostly for petrochemicals, with some tanks for LPG storage.

Enterprise's bid at \$32 million would remain the back-up bid to the winning bid.

Intercontinental Terminals Company (ITC), a petrochemical terminal owner, was the winner of Bigler's land assets at \$20.5 million. It is likely that the land would be used for construction of new petrochemical and oil tanks.

ITC currently has a capacity of 10.7 million bbl in 215 tanks storing petrochemicals, fuel oil, bunker and distillates.

ITC outbid Vopak Terminals North America, which submitted a \$7.76 million bid.

East of the Rockies Refined Spots Editorial Staff

Gulf Coast:

Randy Lusby
(888) 301-2645, Ext. 2241
Yahoo! randy_rockville
rlusby@opisnet.com

Northeast:

Carly Wright
(888) 301-2645, Ext. 2530
Yahoo! cwrightopis
cwright@opisnet.com

Ethanol:

Spencer Kelly
(888) 301-2645, Ext. 2731
Yahoo! spencerk_opis
skelly@opisnet.com

Midwest:

Jessica Nesterak
(888) 301-2645, Ext. 2721
Yahoo! jessica_calendar
jnesterak@opisnet.com

Market News Coverage:

Edgar Ang
(800) 275-0950, Ext. 2532
Yahoo! edgar_ang11
eang@opisnet.com

Cory Wilchek

(888) 301-2645, Ext. 2010
Yahoo! cwilchek
cwilchek@opisnet.com

West Coast / NY:

Denton Cinquegrana
(800) 275-0950, Ext. 2567
Yahoo! denton_opis
dcinquegrana@opisnet.com

Aviation / Jet Fuel:

Cara Offterdinger
(888) 301-2645, Ext. 2528
Yahoo! cara_opis
coffterdinger@opisnet.com

Director:

Ben Brockwell
(732) 730-2519
Yahoo! brock_opis11
bbrockwell@opisnet.com

News Coverage:

Tom Kloza
Rachel Gantz
Beth Heinsohn
Mary Welge

Refined Spots Methodology

OPIS editors track a full-day spot market, with typical hours from 9 a.m. to 5:15 p.m. Eastern Time. Deals received outside those hours are reviewed and evaluated for ranges depending on market circumstances. In order to meet publication deadlines, OPIS reserves the right to not accept deals as part of final ranges if information is sent to/received by OPIS after 5:15 p.m. Editors take an "arm's length approach" in covering the market, canvassing a broad cross-section of market participants active in trading physical barrels. Editors respect the wishes of sources to remain anonymous in their market activities, and any information received regarding parties in deals is kept confidential.

OPIS reserves the right to exclude deals deemed "not reflective" of prevailing or fair market value. These deals may be mentioned in our written commentary, however. Assessing markets requires judgment on the part of our editors. Calls will be reviewed among experienced reporters and judged within the context of that day's market. Ranges are only changed in the case of clerical errors such as typos or transposition mistakes.

Editors confirm and record deals meeting minimum volumes specific to each geographic market. As the majority of the refined products market is transacted on an EFP basis, we follow deals as basis to the New York Mercantile Exchange settlement. We consider fixed-price deals only if they fall within the full-day differential range based off the settled NYMEX, or to assess cash-for-cash "regrade" transactions.

Ranges reflect actual transacted deals. In the case of confirmed trading followed by a shift in the market without a done deal, editors will consider the last deal recorded and weigh it in light of subsequent bids and offers. In the total absence of confirmed deals, we will use the input of the trading community to help us assess a viable "get-done" range and last value, and also consider the relationship the illiquid product may have with more actively-traded grades. Typically, the "lowest sell price" and the "highest bid price" will provide direction.

For a detailed methodology, please visit <http://opisnet.com/methodology.asp#spot>